



**FIRE CURTAIN  
TECHNOLOGIES**

Smoke and Fire Curtains

## Smoke Exhaust **AXIAL FANS**

Axial fans are used when a relatively large amount of air is needed in relation to the necessary pressure.

They are used to supply or extract air in cabins, storage areas or production halls, for example. As well as the standard models there are also versions for applications with an explosion hazard or for extracting air at high temperatures.



**VN-Box Winder HT**

**VN-Winder HT**

## PRODUCT DATA SHEET | INDUCTION FAN

Suitable for temperatures up to 70°C continuously (S1) and 200°C, 300°C or 400°C for 120 minutes (S2).

### Features

- Profiled high efficiency impeller
- Standard RAL coating possible
- F200, F300, F400 and ambient execution
- Different speeds
- Various frequencies, voltages and motor powers
- All kind of accessories like flexible connections, grids, mounting feet, silencers, etc.

### Motor (standard) Control Casing Extra

HT motor IP55, 230/1/50 or 400/3/50

Frequency converter

Steel galvanized

Suitable for high temperatures up to 200°C, 300°C or 400°C for 120 minutes (F200, F300 or F400).

### Certifications

The fans are suitable for smoke exhaust and are certified EN 12101-3:2015.

Standard dimensions up to 1.600 mm.

Diameter > 1.600 mm upon request.

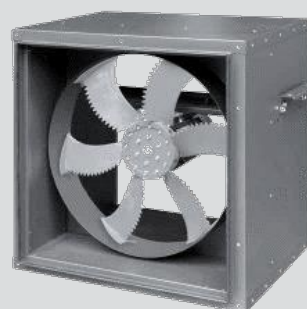
Also construction with sound-absorbing cabinet.

Smoke Extraction motor

Standard galvanized casing

Inspection window

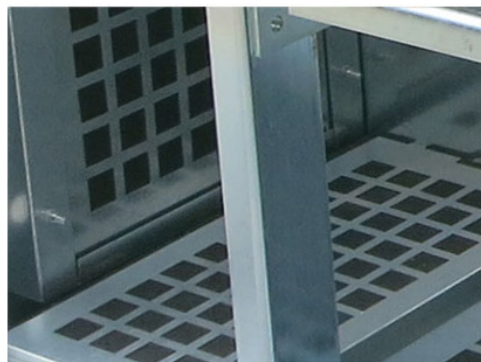
Profiled high efficiency impeller



Construction with sound-absorbing cabinet



## PRODUCT DATA SHEET | VN-WINDER HT



### VN-Winder HT

**Sizes**  
**Capacity**  
**Pressure**  
**Impeller**  
**Accessories**

300 up to 1.600 mm

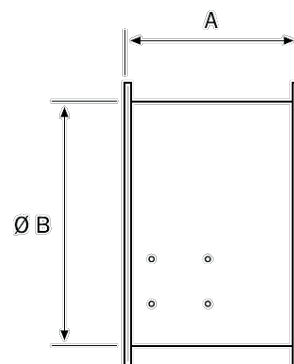
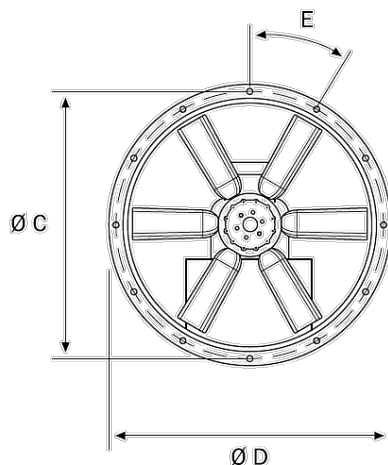
Up to 190.000 m³/h

Up to 1.450 Pa

Aluminum (special high performance geometry)

Inlet cone / Silencers / Protection grid / Shutters / Inspection window /

Flexible connections / Anti-vibration mounts / Support feet / Flanges /



	A	Ø B	Ø C	Ø D	E
315	320	315	355	385	13x45
355	320	355	395	436	13x45
400	320	410	451	486	8x45
450	350	460	500	536	8x45
500	400	510	552	588	12x30

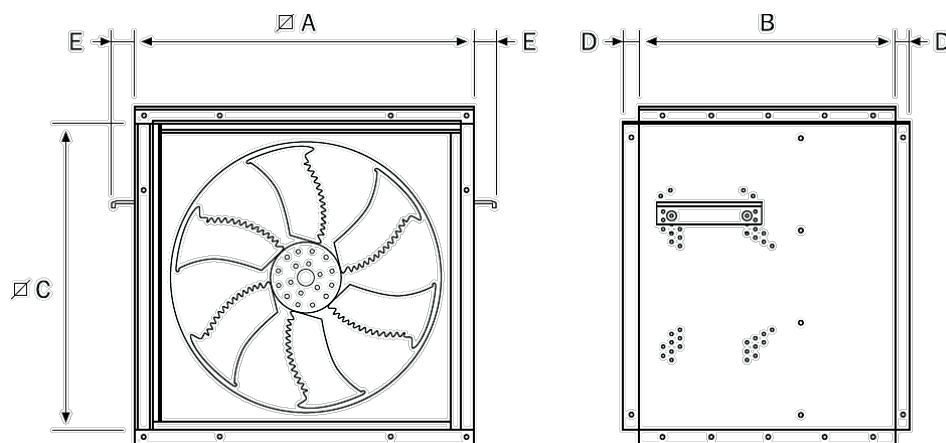
	A	Ø B	Ø C	Ø D	E
560	400	565	620	648	12x30
630	400	640	690	720	12x30
710	500	720	770	800	12x30
800	600	807	860	900	16x22,5
900	700	910	970	1010	16x22,5
1000	700	1010	1070	1110	16x22,5
1250	900	1265	1315	1355	16x22,5
1400	900	1400	1470	1530	16x22,5
1600	900	1600	1680	1740	24x15

## PRODUCT DATA SHEET | VN-BOX WINDER HT

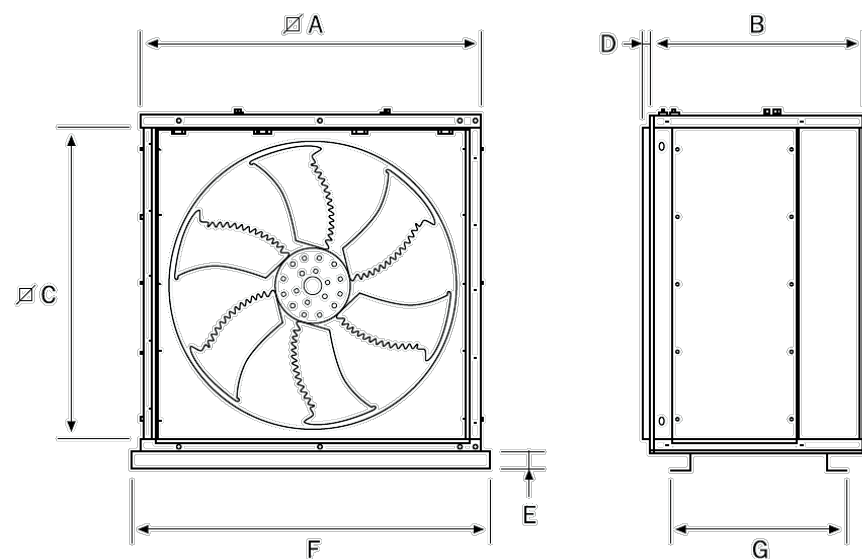


**Sizes**  
**Capacity**  
**Pressure**  
**Impeller**  
**Accessories**

560 up to 1.250 mm  
Up to 140.000 m<sup>3</sup>/h  
Up to 1.300 Pa  
Aluminum profiled  
Grids / Shutters / Anti-vibration mounts / Mounting feet /  
Switches / Frequency converters



	A	B	C	D	E
560	695	530	630	30	40
630	790	550	725	30	40



	A	B	C	D	E	F	G
710	873	650	800	30	100	1053	450
800	973	750	850	30	100	1073	545
900	1167	750	970	30	100	1327	500
1000	1200	750	1065	30	100	1327	620
1250	1490	940	1380	30	100	1572	735

