

Project: Michelin – Mezquite
Location: León, Guanajuato, MEXICO
Client: Constructora Garza Ponce
Product: Fixed Draft Smoke Curtain SM-ST
Application: Draft curtain for warehouse

**Brief:**

in response to the sustained growth in the Mexican automobile market, Michelin tyre manufacturer began the construction of a factory of new high-end tyres for automobiles and heavy equipment in Guanajuato. The normal vulcanization process involved in making tyres is complex and constantly generates smoke. Every tyre factory requires a quality smoke containment system to control and reduce the migration of smoke.

Objective:

Contain smoke generated by the process of 4 lines of machinery and then channel it to the smoke extractors located in the same areas.

Challenge:

Design a smoke containment system with fixed curtains that would adapt to the existing pipes in the process lines, including the passage of a conveyor of one of the lines without obstructing its process.

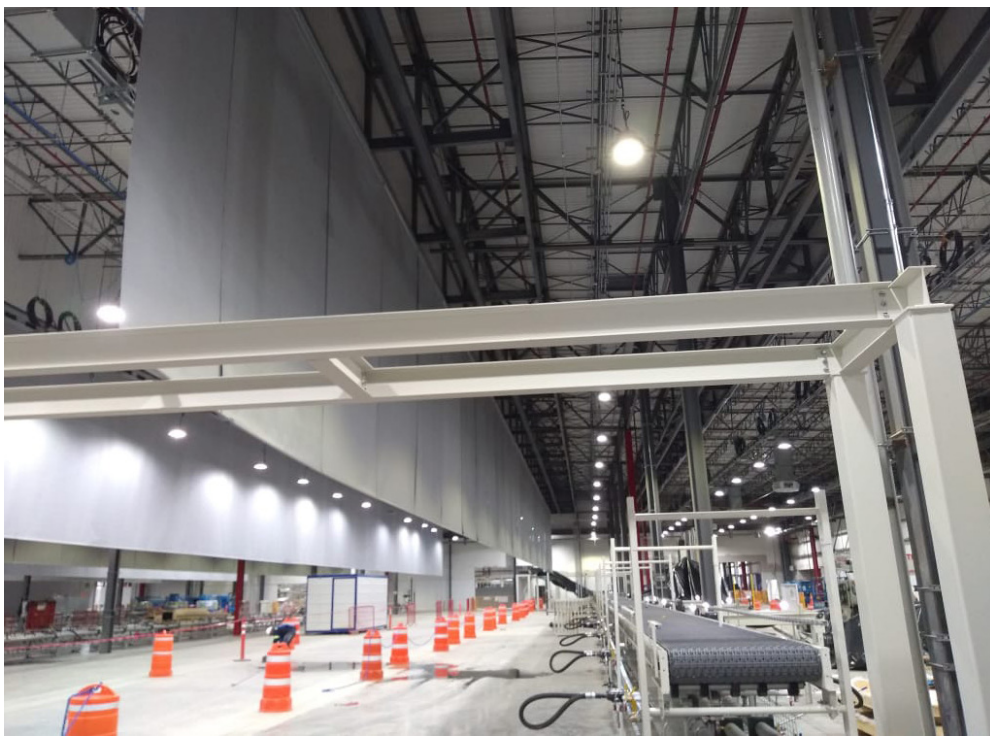
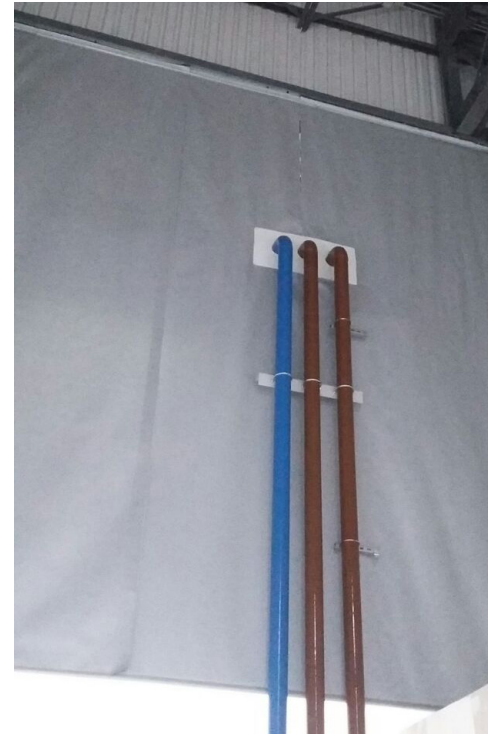
Solution:

Fire Curtain Technologies designed and installed a smoke containment system that adapted perfectly to the existing lines and pipes in the tire factory.





Preforations in curtains



Conveyor

