

**Project:** Michelin – Mezquite  
**Location:** León, Guanajuato, MEXICO  
**Client:** Constructora Garza Ponce  
**Product:** Fixed Draft Curtain SM-ST  
**Application:** Draft curtain for warehouse

**Brief:**

in response to the sustained growth in the Mexican automobile market, Michelin tire manufacturer began the construction of a factory of new high-end tires for automobiles and heavy equipment in Guanajuato. The normal vulcanization process involved in making tires is complex and continuously generates smoke. Every tire factory requires a quality smoke containment system to control and reduce the migration of smoke.

**Objective:**

Contain smoke generated by the process of 4 lines of machinery and then channel it to the smoke extractors located in the same areas.

**Challenge:**

Design a smoke containment system with fixed curtains that would adapt to the existing pipes in the process lines, including the passage of a conveyor of one of the lines without obstructing its process.

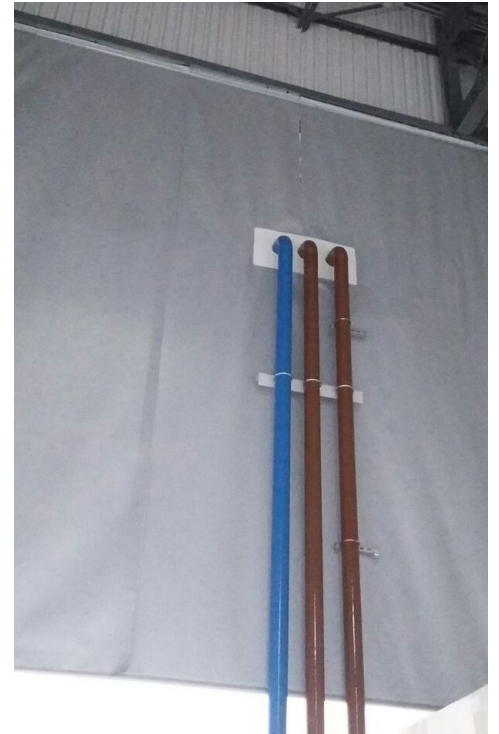
**Solution:**

Fire Curtain Technologies designed and installed a smoke containment system that adapted perfectly to the existing lines and pipes in the tire factory.





**Penetrations in curtains**



**Conveyor**

