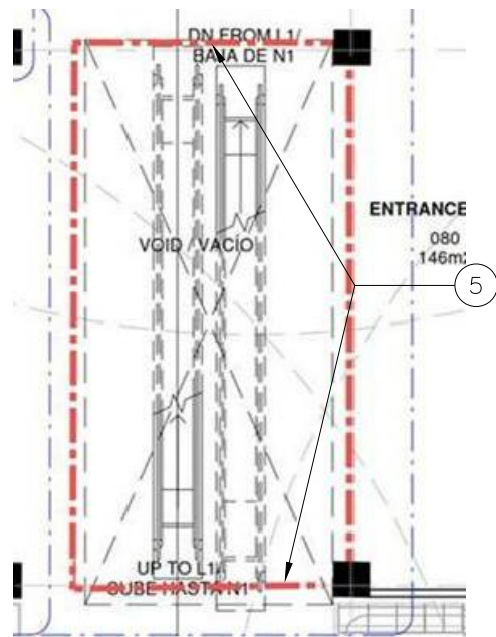
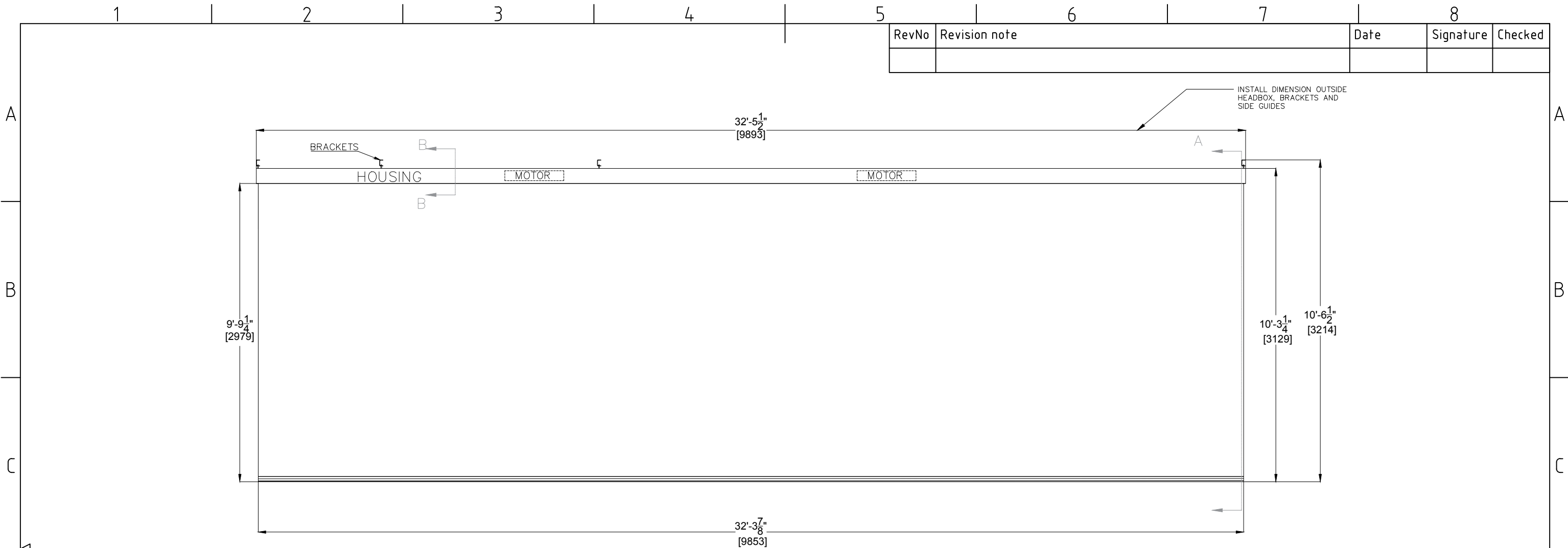


RevNo	Revision note	Date	Signature	Checked



- 1. DOUBLE HORIZONTAL HEADBOX-NOMRAL, TYPE DH-N
- 2. ROLLER BAR WITH GRAVITY DOWN AND 48 VDC DRIVE UP
- 3. SMOKE CURTAIN EN12101-1 (120 MINUTES @ 1112°F)
- 4. BOTTOM BAR "K"
- 5. CURTAIN LOCATION
- 6. OPTIONAL UNIVERSAL BRACKET

SHOP FINISH:
 COMPLETE HEADBOX , SIDE GUIDES & BOTTOM BAR
 POLYESTER POWDER COATING SEMI-GLOSS - 70% GLOSS
 RAL9010 - PURE WHITE

NOMENCLATURE SM5/2/DH/N/G/9893/2979/3/25/X/K/X/X/Z/D120/PS/O/RAL9010		QTY: 2 UNITS	QUOTE NUMBER: M-XXXX	SCALE DO NOT SCALE
JOB: IKEA OCEANIA		FIRE CURTAIN TECHNOLOGIES		
CUSTOMER: CONSTRUCTORA Y EDIFICADORA GIA CIUDAD DE MEXICO, CDMX				
SIZE: 32'-5 4/8" x 9'-9 2/8" [9893mm x 2979mm]	WEIGHT: 553 LBS / 251 KGS	SMOKE CURTAIN SM5/D120		
DATE: 2020-07-23	DRAWING NO.		1/2	
DRAWN BY: DAVID GUEVARA				