



**FIRE CURTAIN  
TECHNOLOGIES**

Smoke and Fire Curtains

## Automatic Smoke Curtain **SMOKEMASTER SM5**

Smoke containment systems prevent the movement of smoke and heat from one area to another. These often take the form of physical barriers such as smoke curtains.

Per NFPA 92B, Draft curtains are generally used to channel or contain smoke that is attached to the underside of the ceiling and protrude a limited distance downward.

Movable (or automatic) smoke curtains may be used where a fixed smoke curtain might be either impractical or aesthetically unacceptable.

Fire resistance  
**60 / 120 minutes**



# PRODUCT DATA SHEET | AUTOMATIC SMOKE CURTAIN SMOKEMASTER SM5

## Description

The SM5 Automatic Smoke Curtain comprises a flexible, heat resistant fabric, which is impervious to smoke and hot gases, wound round a circular tube. The tube contains an electric motor which holds the curtain retracted at ceiling level, and which unrolls the fabric automatically upon a signal from a fire detection system. A bottom bar is fitted to the bottom edge of the fabric to keep it taut and provide a suitable finish when the curtain is retracted.

The Smokemaster compact and flexible design offers many opportunities for modification to suit the requirements of the building. For instance, Smokemaster is available with T and corner pieces.

The automatic smoke curtain is designed to be linked to a fire detection system.

## Smokemaster SM5 is available in 3 versions:

1 Single units (type SI).

2 Double vertical (type DV) units, where continuous runs with overlapped fabric to form a continuous barrier are required.

3 Double horizontal (type DH) units, where there is a premium on space above the ceiling.

## Drive unit

The **G (Gravity)** falls under gravity in a controlled manner to a predetermined level in a fire situation or on loss of power, in accordance with ASB 1/3 of EN 12101-1.

The G version can also be driven down to an

intermediate position.

## Installation

The Automatic Smoke Curtain SM5 is delivered to site in a carefully pre-packaged consignment for ease of installation.

## Testing and certification

Smokemaster SM5 has been successfully tested and certified to EN 12101-1 in accredited third-party test laboratories and is CE marked.

The curtain material achieves a resistance to smoke and heat at 1850°F for a minimum of 120 minutes in accordance with EN 12101-1



## Side guides

Smokemaster is also available with side guides where a high degree of deflection is needed.

## Bottom Bar

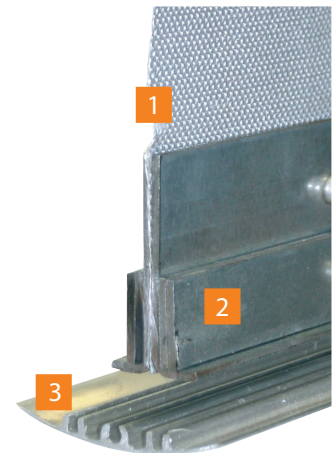
Two bottom bars are available depending upon aesthetic requirements:

- “Industrial” bottom bar
- “Comfort” bottom bar (virtually invisible and is available in any RAL color)

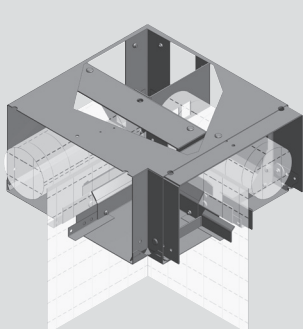
For either the Industrial or the Comfort version, a bottom bar is fixed to the lower edge of the fabric to assist in lowering the curtain, to reduce sideways movement of the fabric in air currents and to provide a neat finish when retracted.

## Comfort Bottom Bar

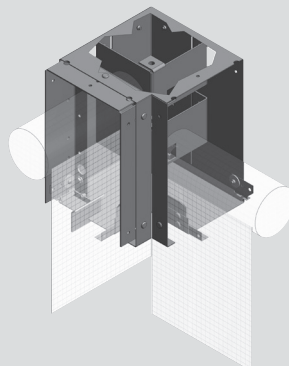
- 1 - Non-flammable glass fiber cloth
- 2 - Weight profile
- 3 - Extruded aluminum bottom bar



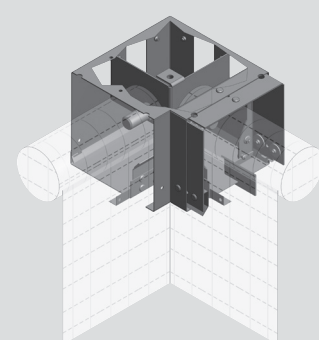
## Corner piece details - designed to provide minimum gap at the joint



Type DH-C90



Type DV-C90



Type SI-C90

# PRODUCT DATA SHEET | AUTOMATIC SMOKE CURTAIN SMOKEMASTER SM5

## KEY FEATURES

Tested and certified to  
**EN 12101-1**

### Smoke tightness tests

Heat resistance  
**60 / 120 minutes**

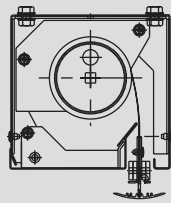
Materials class: **A2-s1, d0**

### Virtually invisible

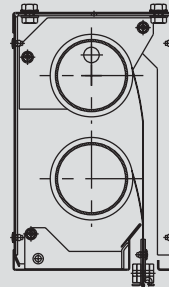
**SIDE GUIDES**  
with integrated seals

Manufactured in Germany by  
**COLT GROUP INTERNATIONAL**  
in accordance with ISO 9001:2008

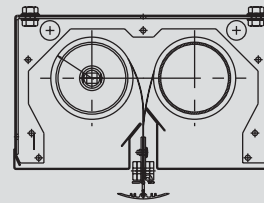
## DIMENSIONS



Type SI



Type DV



Type DH

Housing type	Maximum Dimensions (ft)	
	Width	Height
Standard Single unit	15	9
DV/DH-N Multi unit	5 - ∞	2 - 25

A requirement above these dimensions will be met by installing either double horizontal or double vertical units.

Special units with drops of up to 49 ft are also available.

