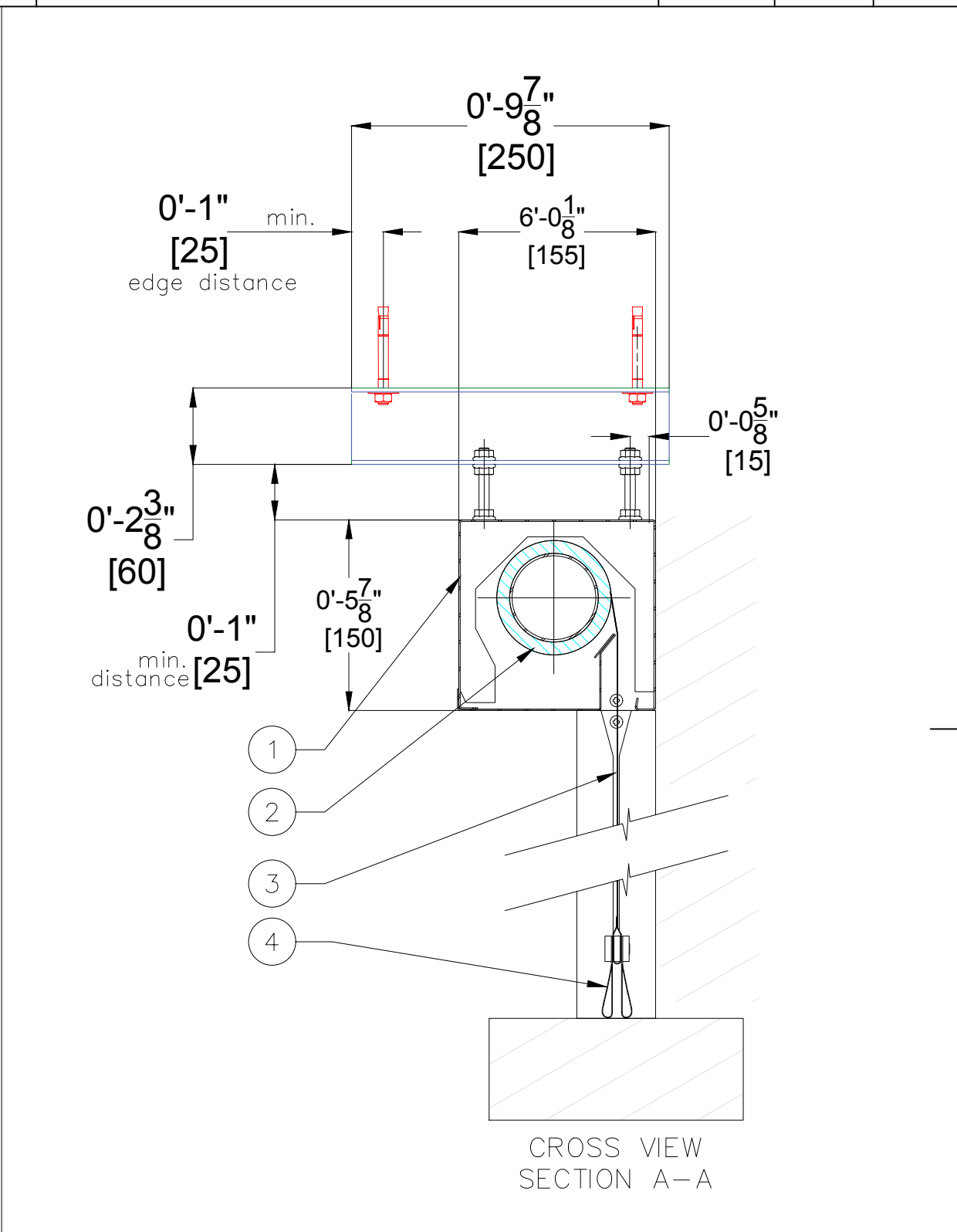


RevNo	Revision note	Date	Signature	Checked



1. SINGLE NORMAL-SIZE HEADBOX, TYPE SI-N	SHOP FINISH:
2. ROLLER BAR WITH GRAVITY DOWN AND 48 VDC DRIVE UP	COMPLETE HEADBOX, SIDE GUIDES & BOTTOM BAR
3. SMOKE-SEALED CURTAIN UL-10D+UL-1784 (60 MINUTES @ 1733°F)	POLYESTER POWDER COATING SEMI-GLOSS - 70% GLOSS
4. SMOKE-SEALED BOTTOM BAR "DP"	RAL9010 - PURE WHITE
5. SIDE GUIDES, TYPE FD-2 (IN FRONT OF THE WALL)	
6. OPTIONAL UNIVERSAL BRACKET	

NOMENCLATURE SD/1/SI/N/G/1500/2743/1/0/X/DP/FD/2/Z/60/PS/0/RAL9010		QTY:	QUOTE NUMBER:	SCALE DO NOT SCALE
JOB:		FIRE CURTAIN TECHNOLOGIES		
CUSTOMER:				
SIZE:	4'-11" x 9'-0" [1500mm x 2743mm]	WEIGHT:	SMOKE CURTAIN SD/60	
DATE:	2020-06-16	DRAWING NO. 1/2		
DRAWN BY: DAVID GUEVARA				