

Automatic Draft Smoke Curtain **SMOKEMASTER SM5**

 **FIRE CURTAIN
TECHNOLOGIES**
Smoke and Fire Curtains

Smoke containment systems prevent the movement of smoke and heat from one area to another. These often take the form of physical barriers such as smoke curtains.

Per NFPA 92B, Draft curtains are generally used to channel or contain smoke that is attached to the underside of the ceiling and protrude a limited distance downward.

Movable (or automatic) smoke curtains may be used where a fixed smoke curtain might be either impractical or aesthetically unacceptable.

The curtain comprises a flexible, heat resistant fabric, which is impervious to smoke and hot gases, wound round a circular tube. The tube contains an electric motor which holds the curtain retracted at ceiling level, and which unrolls the fabric automatically upon a signal from a fire detection system. A bottom bar is fitted to the bottom edge of the fabric to keep it taut and provide a suitable finish when the curtain is retracted.

PRODUCT DATA SHEET | SMOKEMASTER SM5

Smokemaster is available in 3 versions:

1 - Single units (type SI).

2 - Double vertical (type DV) units, where continuous runs with overlapped fabric to form a continuous barrier are required.

3 - Double horizontal (type DH) units, where there is a premium on space above the ceiling.

Standard single roller curtains are available between 1500 to 5000mm in length, and drops are between 500 and 8000mm. A requirement for lengths greater than 5000mm will be met by installing either double horizontal or double vertical units. Special units with drops of up to 15000mm are available.

Its compact and flexible design offers many opportunities for modification to suit the requirements of the building. For instance, Smokemaster is available with T- and corner pieces.

Drive units

- **The G (Gravity)** version falls under gravity in a controlled manner to a predetermined level in a fire situation or on loss of power, in accordance with ASB 1/3 of EN 12101-1.

- **The D (Drive)** version drives down in a controlled manner to a predetermined level upon receipt of a signal, in accordance with ASB 2/4 of EN 12101-1.

Either version can also be driven down to an intermediate position, for instance over an escalator, where it is held at that position for some time before descending further.

Side guides

Smokemaster is also available with side guides where a high degree of deflection is likely.

Testing and certification

Smokemaster SM5 has been successfully tested and certified to EN 12101-1 in accredited third-party test laboratories and is CE marked. The D120 curtain material achieves a resistance to smoke at 600°C for a minimum of 120 minutes. The DH120 curtain material achieves a resistance to heat for a period of 120 minutes, following the time-temperature curve in EN 1363-1 with a temperature of 1049°C at the end of the test. The material achieves class A2-s1, d0, in accordance with BS EN 13501-1.

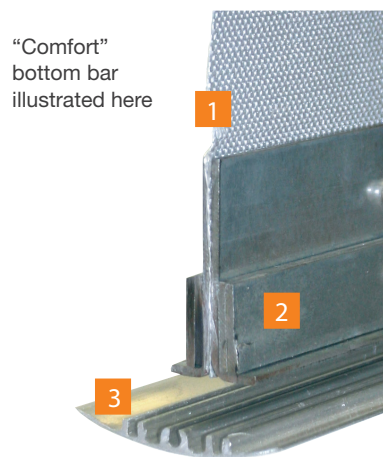
Installation

Smokemaster is delivered to site in a carefully pre-packaged consignment for ease of installation. Two bottom bars are available depending upon aesthetic requirements: the "Industrial" bottom bar and the "Comfort" bottom bar. The "Comfort" bottom bar is virtually invisible and is available in any RAL color.

Bottom Bar

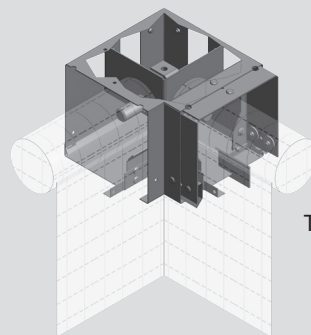
For either the Industrial or the Comfort version, a bottom bar is fixed to the lower edge of the fabric to assist in lowering the curtain, to reduce sideways movement of the fabric in air currents and to provide a neat finish when retracted.

- 1 - Non-flammable glass fiber cloth
- 2 - Weight profile
- 3 - Extruded aluminum bottom bar

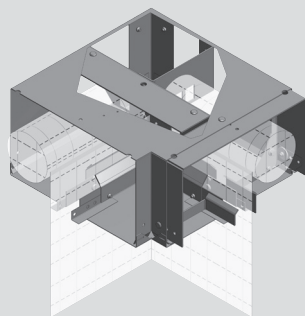


"Comfort" bottom bar illustrated here

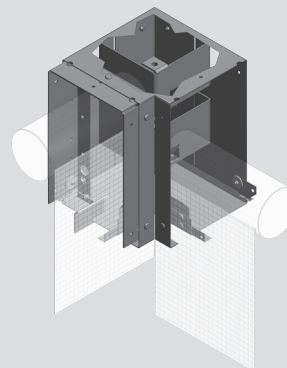
Corner piece details - designed to provide minimum gap at the joint



Tipo SI-C90

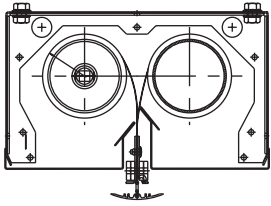


Tipo DH-C90

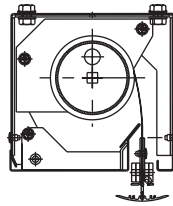


Tipo DV-C90

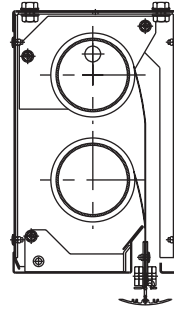
PRODUCT DATA SHEET | SMOKEMASTER SM5



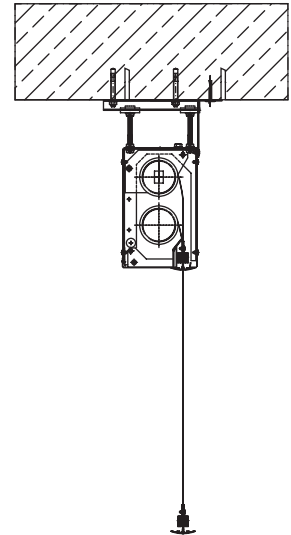
SM5 Type DH



SM5 Type SI



SM5 Type DV



SM5 Type DV

The roller assembly contains all the electronic components. All Smokemaster curtains require a 230 V ac power source. With the D version an additional 24 V dc source is required for the brake.

D VERSION

Power supply	230V/1ph/50 Hz
Power rating	126 W
Current	0.55 A
Torque	9.9 Nm/17 min-1
Protection class	IP 44
Unroll speed	0.08 m/s

G VERSION

Voltage	48 V DC
Power	60 W
Current	1.25 A
Holding power	5.8W
Unroll speed	0.15m/s
Force	28 kg
Protection class	IP 20

The curtain material is either 0.4mm or 0.54mm thick with a weight of 455 g/m² or 699 g/m² respectively, depending on the classification.

